

FUND OVERVIEW

Investment Objective

To generate a reasonable level of capital appreciation and income distribution to the Unit Holders through a diversified portfolio of investments.

Potential Investor

ASN Equity 5 is suitable for:

- Seek capital appreciation
- Have high risk tolerance
- Understand the risks of investment

MARKET REVIEW

As at end June 2021, the fund reported an annualised return of 11.80%, over a 1-year basis, outperforming its benchmark's 4.05% return.

Global markets continued its positive trend in June, with the FTSE All-World Index rising to 1.24%. Year-to-date global markets have seen an overall positive performance of 12.56%. Americas was the best performing region in June, with the FTSE Americas Index up 2.58%. The highest performing country index was FTSE Brazil Index at 5.39% for the month. Conversely, the worst performing country index were the FTSE Portugal Index and FTSE South Africa Index, both finishing the month down at -7.46%. Malaysia's KLCI dropped 50.92 index points during the month, registering a negative performance of 3.22%. Within the size segments of the FTSE Bursa Malaysia EMAS Index, the FTSE Bursa Malaysia Mid 70 Index was the best performer in the FTSE Bursa Malaysia Index Series, falling 1.92% for the month, overshadowing the poor performance of the FTSE Bursa Malaysia Small Cap Index and the FTSE Bursa Malaysia EMAS Index which dropped 3.56% and 2.95%, respectively. The top ten constituents of the FTSE Bursa Malaysia KLCI account for 60.59% of the index, as compared to 41.52% for FTSE Bursa Malaysia EMAS Index and 15.80% for the FTSE Bursa Malaysia Small Cap Index. Information Technology was the best performing sector in the FTSE Bursa Malaysia KLCI Index, registering 50.42% with Real Estate being the second-best performer at 15.68%. Conversely, Health Care was the worst performing sector followed by Consumer Discretionary, which fell to 8.15% and 6.49% respectively. With an index weighting of 34.82% and 6 constituents, Financials is the largest industry in the FTSE Bursa Malaysia KLCI. This compares to a weight of 25.30% and 9 constituents in the FTSE Bursa Malaysia EMAS Index. Industrial Goods & Services is the largest industry in the FTSE Bursa Malaysia Small Cap with an index weighting of 18.10% and 39 constituents.

Source: Novagni Analytics and Advisory Sdn Bhd

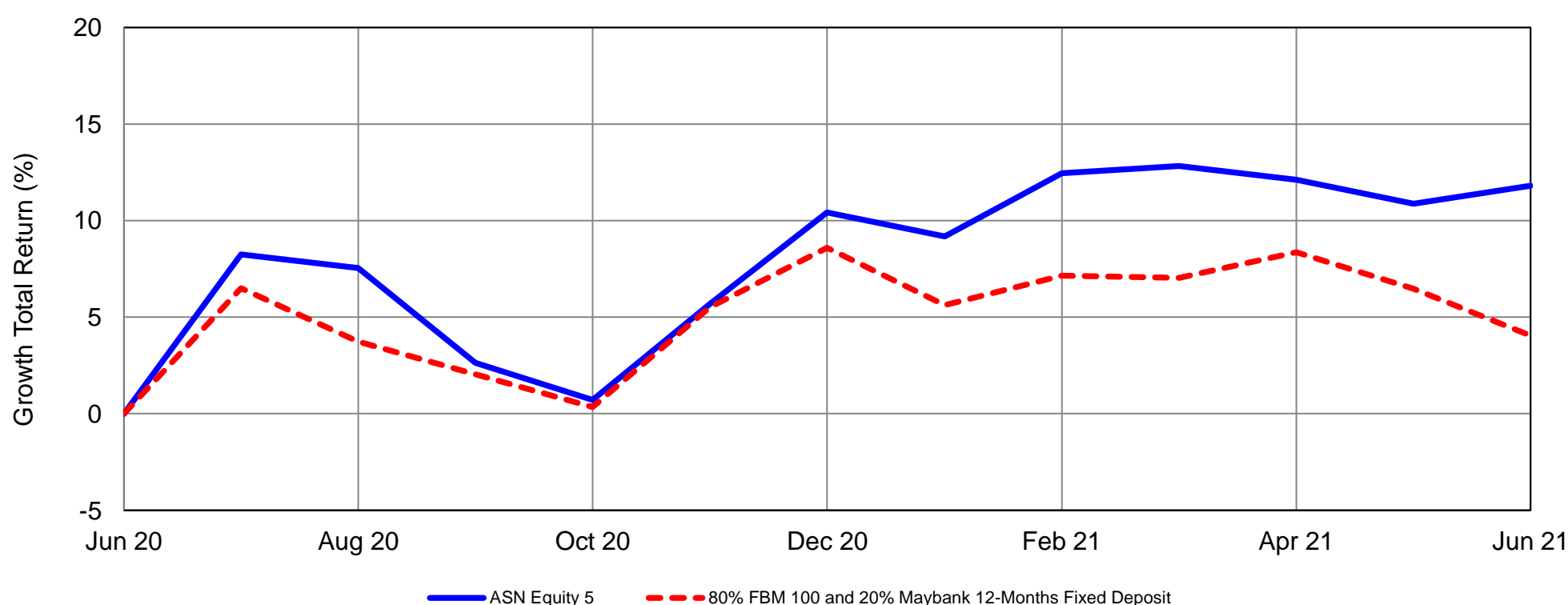
FUND PERFORMANCE

Fund and Benchmark Performance

	Cumulative Returns (%)					Annualised Returns (%)		
	6 months	1 year	3 years	5 years	Since Inception	3 years	5 years	Since Inception
Fund	1.25	11.80	-	-	4.09	-	-	1.46
Benchmark	-4.18	4.05	-	-	-8.03	-	-	-2.98

Source: Novagni Analytics and Advisory Sdn Bhd

1 Year Growth Total Return from 30 June 2020 to 30 June 2021



The value of units may go down as well as up. Past performance is not indicative of future performance.

Source: Novagni Analytics and Advisory Sdn Bhd

PORTFOLIO INFORMATION

Top 10 Holdings#

CIMB Group Holdings Bhd	7.13%
Hong Leong Bank Bhd.	4.10%
PETRONAS Chemicals Group Bhd.	3.03%
Astro Malaysia Holdings Bhd.	2.80%
IHH Healthcare Bhd.	2.79%
Malayan Banking Bhd.	2.78%
Malaysia Airports Holdings Bhd.	2.69%
MR. D.I.Y. Group (M) Bhd.	2.51%
Press Metal Aluminium Holdings Berhad	2.38%
Public Bank Bhd	2.31%

Sector Allocation#

Financials	18.61%
Cash & Others	14.26%
Industrials	11.78%
Materials	10.42%
Consumer Discretionary	10.39%
Information Technology	9.36%
Communication Services	8.53%
Health Care	4.47%
Consumer Staples	4.16%
Energy	3.87%
Utilities	2.23%
Real Estate	1.91%

As percentage of NAV. The sector allocation is based on GICS sector classification. Please note that all figures are subject to frequent changes on a daily basis.

Source: Amanah Saham Nasional Berhad

Where a distribution is declared, investors are advised that following the distribution, the NAV per unit will be reduced from cum-distribution NAV to ex-distribution NAV.

The Replacement Master Prospectus of ASNB dated 1 February 2020 ("Prospectus"), has been registered with the Securities Commission Malaysia ("SC"). Please read and understand the content of the Prospectus together with the Product Highlights Sheets which are available at the ASNB website (www.asnb.com.my), branches and agents. Units will be issued upon receipt of the registration form referred to and accompanying the Prospectus. Before investing, please consider the risks of investing as well as the fees and charges involved. Unit prices and distribution payable, if any, may go down as well as up. The past performance of a fund should not be taken as indicative of its future performance.

Investors who wish to know the key features of a specific unit trust fund of ASNB may request the Product Highlights Sheet issued by ASNB at any office of ASNB, agents and website.

Novagni Category

EQUITY: MALAYSIA

Benchmark

80% FBM 100 and 20% Maybank 12-Months Fixed Deposit

As at 30 June 2021

Total NAV	RM355.50 million
Unit in Circulation	367.80 million units
NAV per unit	RM0.9665

High/Low NAV per unit

	High (RM)	Low (RM)
3 month	0.9901	0.9399
6 month	0.9901	0.9399
1 year	0.9901	0.8687

Income Distribution Declared

Year	Net (sen per unit)	Yield (%)
2020	3.10	3.49%
2019	3.75	4.06%

Source: Novagni Analytics and Advisory Sdn Bhd

FUND FACTS

Fund Category	Equity
Type	Growth
Launch Date	24 September 2018
Financial Year End	30 September
Investment Manager	Permodalan Nasional Berhad
Trustee	AmanahRaya Trustees Berhad
Min. Initial Investment	RM10
Min. Additional Investment	RM1
Max. Additional Investment	Unlimited
Sales Charge	Up to 5.0% of the NAV per unit
Redemption Charge	None
Redemption Period	Within ten (10) days upon receipt of repurchase request as disclosed in the Guidelines on Unit Trust Funds.
Form of Investment	Cash/cash equivalent
Switching Fee (to other Variable Price funds)	Difference between sales charge of the Funds switched out, subject to a minimum charge of RM25 per transaction
Switching Fee (to Fixed Price funds)	Nil
Transfer Fee	Up to RM15 per transaction
Management Fee	Up to a maximum of 1.0% per annum of the NAV, calculated and accrued daily
Trustee Fee	Up to 0.07% per annum of NAV, calculated and accrued daily